

# Assembly and operating instructions for Skylight products



[www.Luxaflex.com](http://www.Luxaflex.com)

## General information

The basic assembly instructions given in this booklet apply to all skylight products: roller blinds, Venetian blinds, Plissé blinds, Duette® Shades and combined products (roller blinds with Plissé or Duette® and Plissé with Duette®). Details of the assembly procedure can vary from one product to another as described below, however, it is important to read the information carefully before installing and using your skylight product and to follow the assembly instructions carefully.

## Contents of Package

The package you have received should contain the following items :

- The Skylight product.
- 2 Cassette mounting brackets with 2 screws per bracket.
- 2 Side channels with 2 - 4 screws per channel depending on the drop of your blind.
- 2 Packing profiles with 3 screws per profile (only for use with 100 or 105° angle framed windows).
- 1 Side guiding sill bracket and cable locking ring (only supplied for wide Venetian blinds where a centre support cable is required).

Please check that all the relevant components above have been supplied.

## Standard Fitting Procedure

### 1. Preparation for fitting

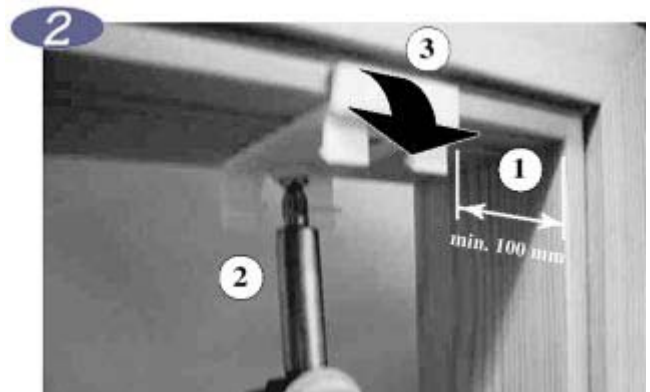
Remove the skylight from its packaging.

#### *Warning:*

- Keep the product stacked at this stage.
- Do not remove transport cord cleat(s) or retaining tapes yet.

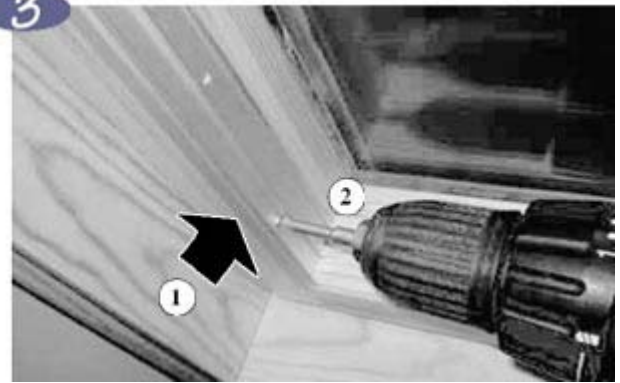
### 2. Fitting the cassette mounting bracket

- Place the mounting brackets with the positioning lip against the top of the frame, at least 100 mm from the edges [1].
- Screw the brackets into place [2].
- Now break off the positioning lips [3].



### 3. Mounting the packing profiles for 100 or 105° frames (only if packing profiles supplied)

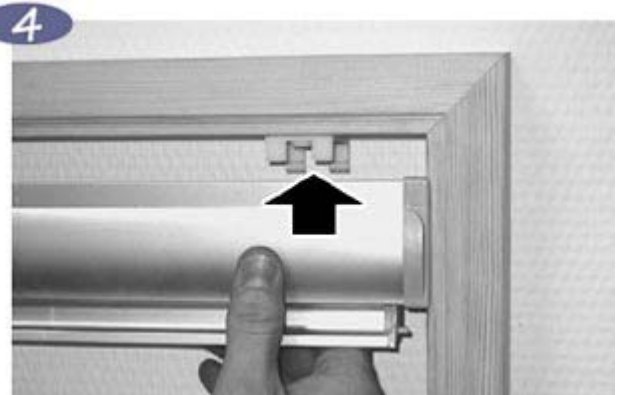
- Place the packing profile with the stop against the frame [1].
- Screw the packing profiles into place [2].



### 4. Fitting the cassette

- Taking the cassette in both hands and push it up into the mounting brackets.
- The front lip at the top of the cassette should now be sitting flush with the frame.

(Gebruik bij rolgordijnen de meegeleverde handschoenen om het risico van vlekken op de stof te voorkomen).



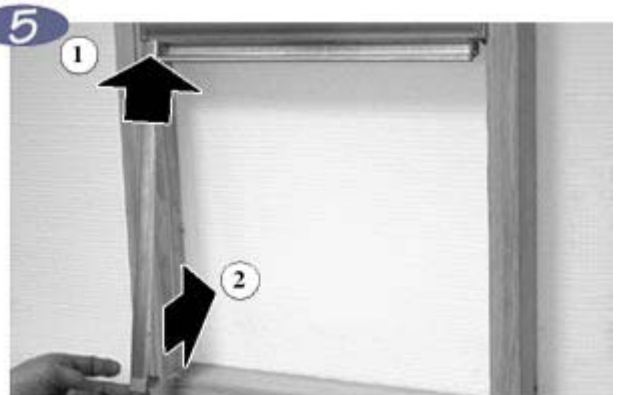
### 5. Mounting the side channels

- Slide the channel under the cassette on each side [1].

*Warning:*

- Make sure that you locate the end guide of the bottom bar into the groove of the channels.
- Check that you have not trapped the cords between the frame and the channels.

- Position the channels against the frame [2].



### 6. Screwing the side channels onto the frame

Use enough screws to fill all the holes predrilled in the side channels.



### 7. Removing transport cord cleat

- Remove the cords from the transport cleat.
- Remove the transport cleat and keep it in a safe place, as it will be useful if you need to dismantle the product.



### 8. Mounting cord tension clips

Clip both cord tension clips into the holders at the bottom of each side channel.

*Warning:* For Duette® and Plissé shades, ensure that the cords are not twisted.

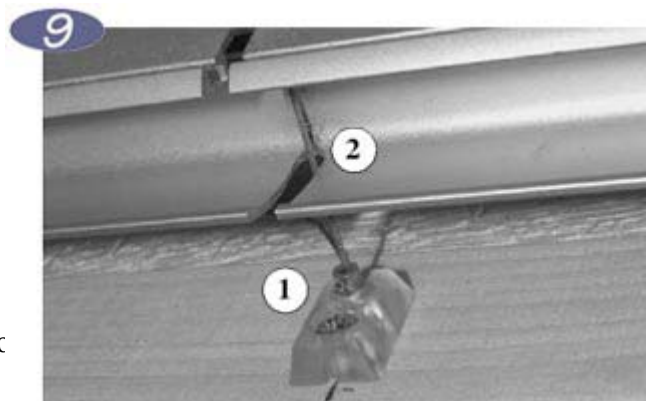


## Assembly Options

### 9. Centre tension cable for venetian blinds

*(Only supplied with wide Luxaflex® Venetian blinds)*

- Pull down the blind completely.
- Place the side guiding sill bracket [1] so that its opening is directly below the groove in the bottom bar [2].
- Mark the position of the sill bracket, and screw into place.
- Slide the locking ring onto the cable with its wider rim at the bottom, and pull the cable tight to remove any slackness.
- Slide the locking ring up by approximately 20 mm from the bottom of the frame and tighten the grub screw to secure.
- Pull the cable down and locate the locking ring under the sill bracket.



## Operation

### 1. Opening and closing.

Push the bottom bar up to open the product or down to close it. If the product is mounted in an inaccessible position, it can be operated with the aid of a control rod (available as an optional extra). The control rod can be located into the bottom bar, and allows the product to be opened and closed with very little effort.

### 2. Adjusting the angle of the slat (venetians)

The angle of the slats can be adjusted by turning the knob on the cassette. If the blinds are mounted at high level, this operation can also be carried out with the aid of the control rod.

### 3. Battery driven Tilt only (venetians)

If your venetian blind has been supplied with this option, the slats can be tilted using the remote control transmitter supplied.

## Demounting

To demount the product completely, carry out the fitting instructions in reverse order. To summarise briefly, this means:

- Slide the bottom bar up as far as it will go.
- If you have retained the transport cleat, reattach this to the bottom bar.
- Pull the cord tension clips out from the side channels and wind the cords round the transport cleat.
- Unscrew the side channels.
- Ease the cassette from its brackets with the aid of a flat bladed screwdriver.
- Unscrew the cassette mounting brackets.

## Cleaning

### Roller blinds, Duette® and Plisse shades

The blinds should be cleaned regularly with a feather duster to prevent excessive build up of dust. All fabrics with the exception of metalised fabrics can also be wiped with a clean damp cloth. A non-synthetic mild detergent may also be added if necessary to remove more stubborn dirt. You should only rub or dab gently, to avoid damage to the fabric.

### Venetian blinds

Luxaflex® Skylight Venetian blinds can be kept clean by regular use of a feather duster. If necessary, a damp cloth may be used. Stubborn dirt can be removed with the aid of water to which a gentle all purpose cleaner has been added.

The above cleaning advice has been formulated with care. However we cannot accept responsibility for the results of your cleaning activities. For further queries, please contact your Luxaflex® dealer.