

Easyfit shutter kit

Recess window - no handle

Supplied in the box:

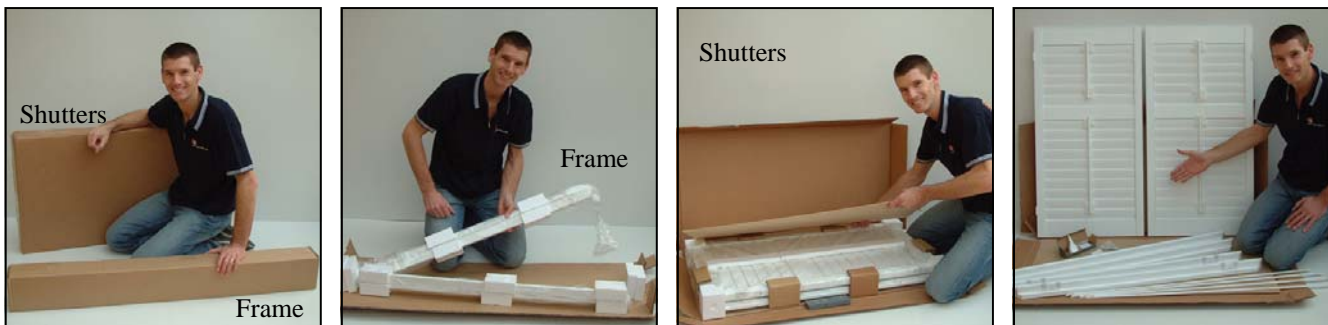
All the items below can be found in a small box at the end of one of the shutter boxes:

- Frame screws - For fixing the shutter frame to the window or battens
- Hinge screws - For final fixing of the frame hinges
- Hinge packers – For final adjustment.
- Hinge pins - To connect the shutters together
- Interlocking keys - To connect the outer frame together
- Touch-up paint - For final fixing of the frame hinges (For Elite or hardwood shutters only)

Tools required: (NOT SUPPLIED)

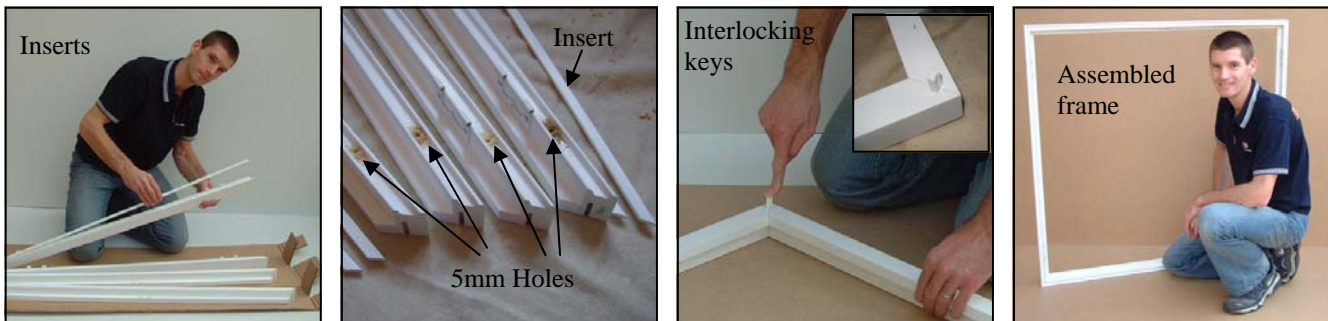
- Knife – For unpacking
- Hammer - Inserting the interlocking frame keys
- Suitable drill – For screwing the frame to the window/battens
- 3mm pilot drill – For final hinge screws.
- Spirit Level – For bay, shaped or track mounted shutters

NB: Each box is labelled with the room name or line number. The product is not. Therefore, before unpacking, ensure each box is in the correct room and paired with the appropriate frame box. Then carefully unpack the shutters and frames.



1. Assembling the frame:

- Remove the Easyfit inserts
- Lay the 4 sections of the frame face down on the floor
- Push or gently hammer the kite shaped plastic interlocking keys into the holes provided.



2. Assembling the shutters:

- The mouse hole is at the top of the shutters
- Connect the shutters together with the metal hinge pins.

3. Fitting the shutters in the frame:

- Stand the shutters in the frame and position the two parts of the hinge together (frame & shutter).
- Make sure there is an even 2mm gap between the bottom of the shutters and the bottom of the frame.
- Adjust the hinges (up/down) to achieve the correct gap.
- In the event of a tight pin, loosen the screws on the frame.

Easyfitshutter Kit

Recess window - no handle



4. Fitting the shutters to the window.

Place two wedges on the window sill.

Lift and sit the frame onto the wedges you placed on the window sill.

Place two more wedges each side at the top of the frame.

Centralise the frame by moving the wedges in and out until you have an even shadow gap of about 5mm.

Ensure the shutters fit **squarely** within the frame when making your adjustments.

Place the final wedge at the top, stand back and make sure everything looks even/square.

Place your screws in the 5mm pilot holes and fix the frame in place.



5. Final adjustments:

Open and shut the shutters. They should fit squarely inside the frames.

Screw the final hinge screws into place.

Remove the backing from the sticky pads and replace the Easyfit inserts into place with your thumb.



You can access fitting tips and advice when you are logged into your account