

# Standard Shutter Specification

## Material

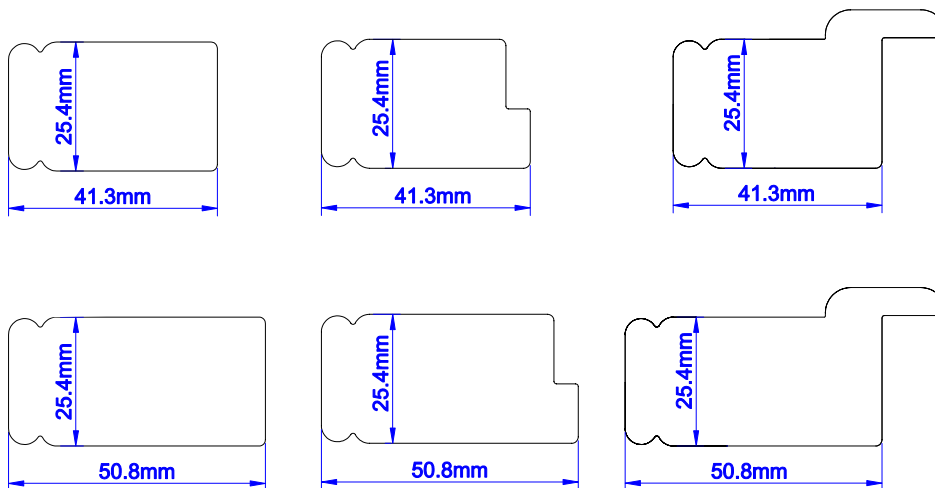
Plastic coated engineered MDF with hardwood core.

## Stiles

These are rectangular rails that form the side edges of the shutter panels, running vertically on either side of the panel. They are engineered for extra strength with a centre core of hardwood making them warp resistant and available in two widths to provide extra strength and with a D mould on the front to cut down on light penetration.

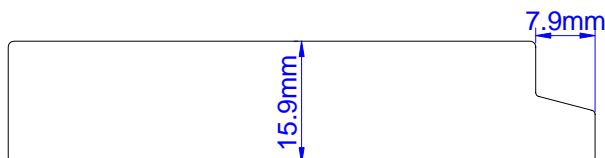
The dimensions of the **Small** side stiles are 41.3mm wide (when looking from the front) and 25.4mm thick (when viewing from the side).

The dimensions of the **Wide** side stiles are 41.3mm wide (when looking from the front) and 25.4mm thick. (when viewing from the side).



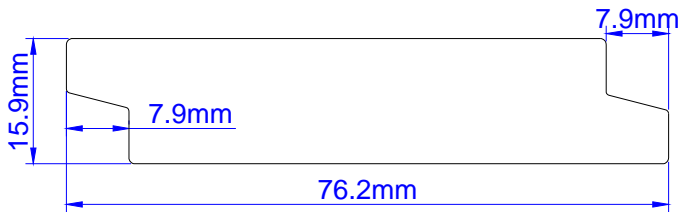
## Rail

The top/bottom rails are the respective top/bottom edge sections of the shutter. These are rectangular rails running horizontally, the size of which is automatically calculated according to the overall panel size and louvre size chosen. In most instances the top and bottom rail will be deeper than 80mm. These rails are traditionally jointed using mortice and tenons for high strength.

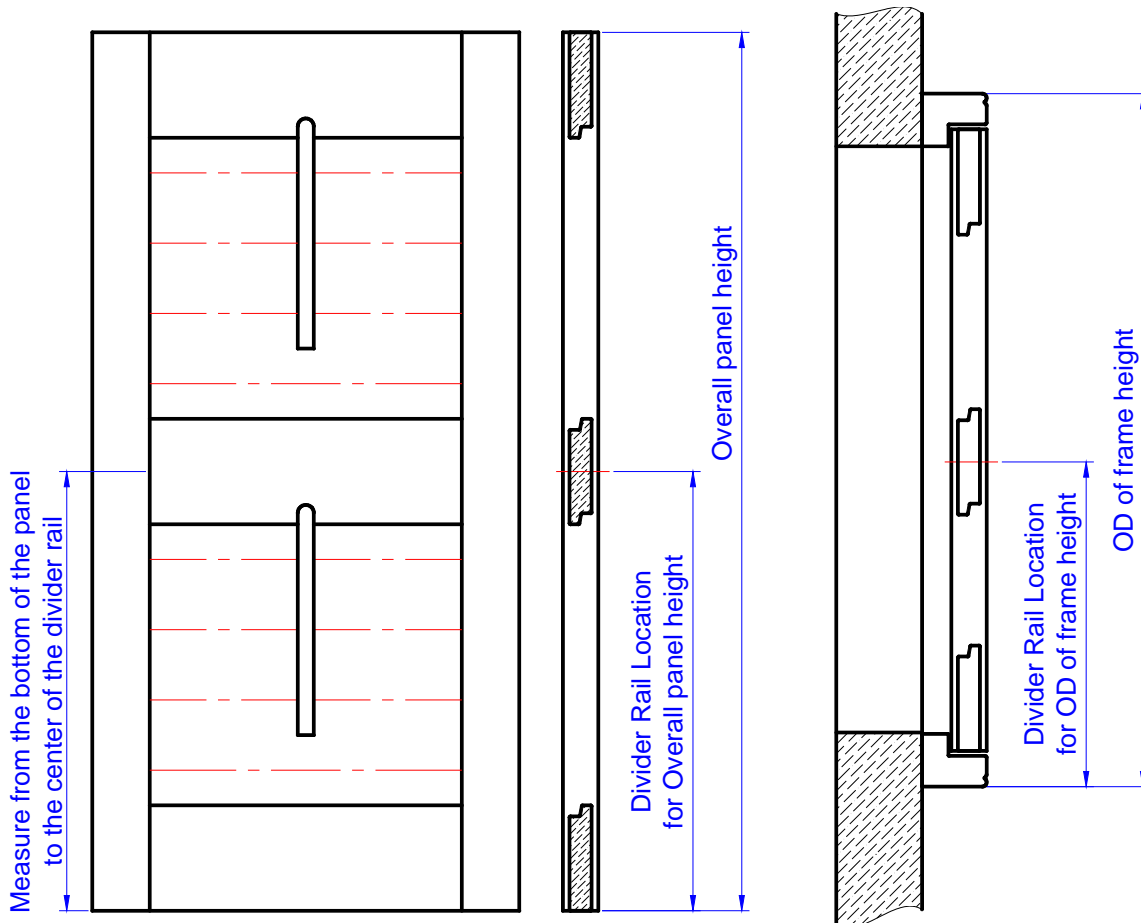


### Horizontal Divider rail

The horizontal middle rail is the dividing rail used for strength, gaining privacy and ensuring the design of the shutters matches the window. The standard width of this rail is 76.2mm. Any window height over 1800mm requires a horizontal middle rail to be guaranteed.



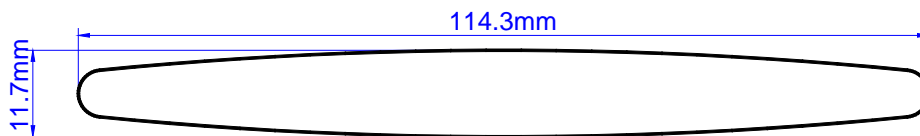
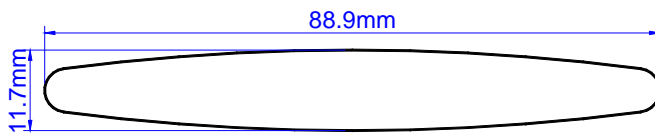
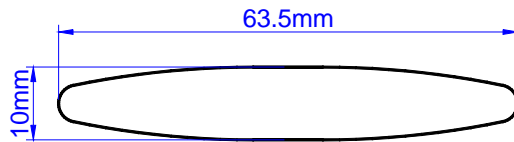
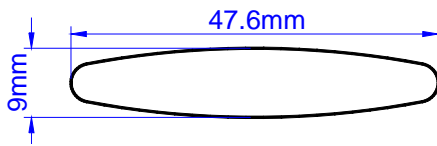
The horizontal divider rail is measured from the bottom of the shutter or shutter frame to the centre of the rail as per the drawings below.



### Louvre size

The horizontal slats called 'louvers or louver blades' are oval in cross-section are available in 4 different sizes. Small, Medium, Large and Extra Large. The most often requested by customers is 'Medium'.

- Small            47.6mm        (47mm)
- Medium        63.5mm        (64mm)
- Large           88.9mm        (89mm)
- Extra Large   114.3mm       (114mm)



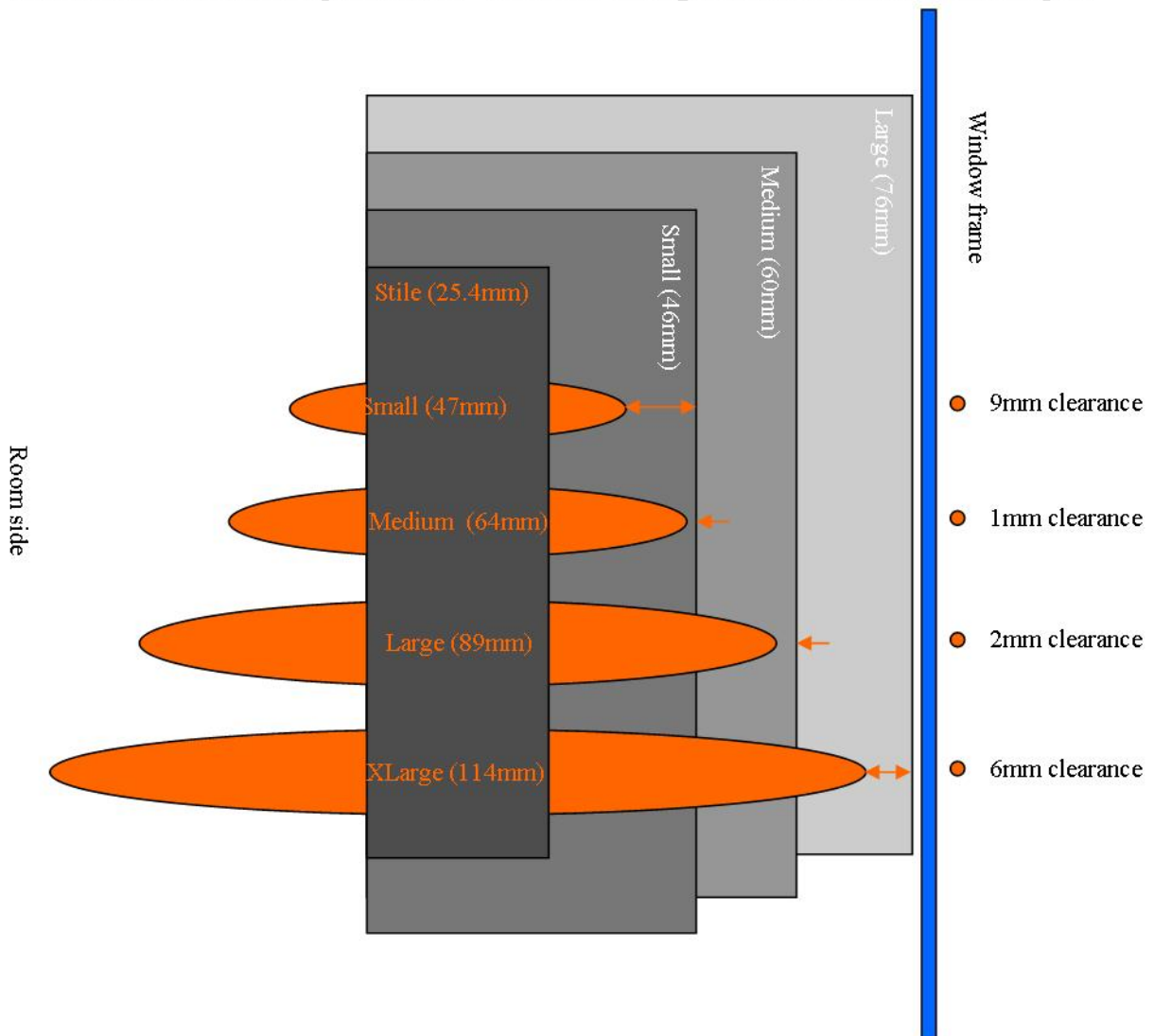
### Louvre blade protrusion:

When the shutters are fitted in frames and the louvers are open horizontally the following table below shows how much room is left from the back of the louvre blades and the back of the shutter frame.

For example a Medium louvre blade fitted in a Medium frame provides you with 15mm clearance for a handle, if the handle protrudes more than 15mm from the face of the window you are fitting the frame to, it will catch on the louvre blade unless you order a middle rail to match the handle height, a larger frame or battens.

Frame build outs provide extra clearance if required.

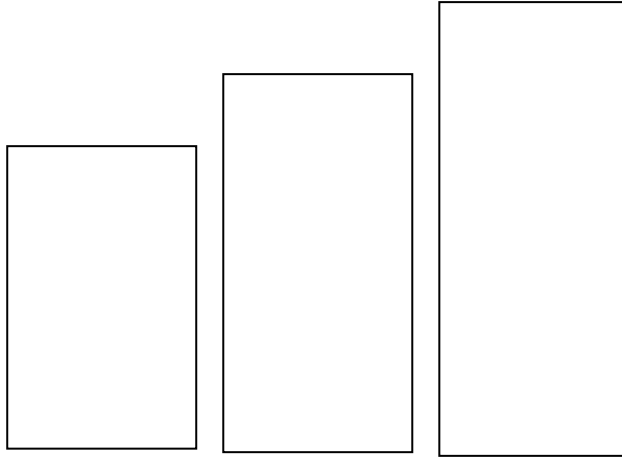
### Standard Louvre blade protrusion - Side view through louvre blades and frame depths



Frame size	Small louvre (47mm)	Medium louvre (64mm)	Large louvre (89mm)	Extra Large (114mm)
Small frame (46mm)	9mm	1mm	-11mm	-24mm
Medium frame (60mm)	23mm	15mm	2mm	-10mm
Large frame (76mm)	39mm	31mm	18mm	6mm

**Stock batten sizes**

- Small (25 x 40mm)
- Medium (25 x 50mm)
- Large (25 x 60mm)

**Custom battens**

- Can be made to the nearest mm, with cut out angles or rebates.

**Angled corner battens**

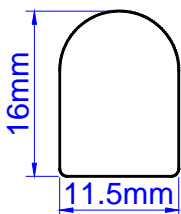
- Customised to your requirements x height of your frame

**Bay corner battens**

- 46 x 46mm x height of the shutter frame

**Control rod:**

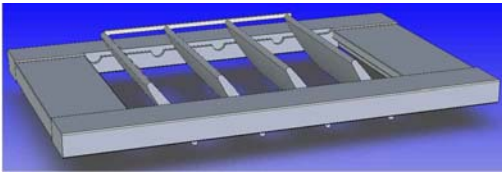
The control or push rod is the rounded rod running up the middle of the shutter, connecting the louvres blades, used to tilt the louvre blades up and down in unison. They are connected to the louvre blades by stainless steel staples.



**Offset Control rod:** You can offset the control to the left or right of the shutter. The standard offset is 25mm from the centre of control rod to the end of the louvre on the hinge side.

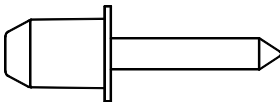
### Hidden Control rod:

The stiles have a notch out of the stile, to allow for the hidden control rod behind the shutter. This option is only available for the 64mm/ 89mm louvres.



### Louvre Pin

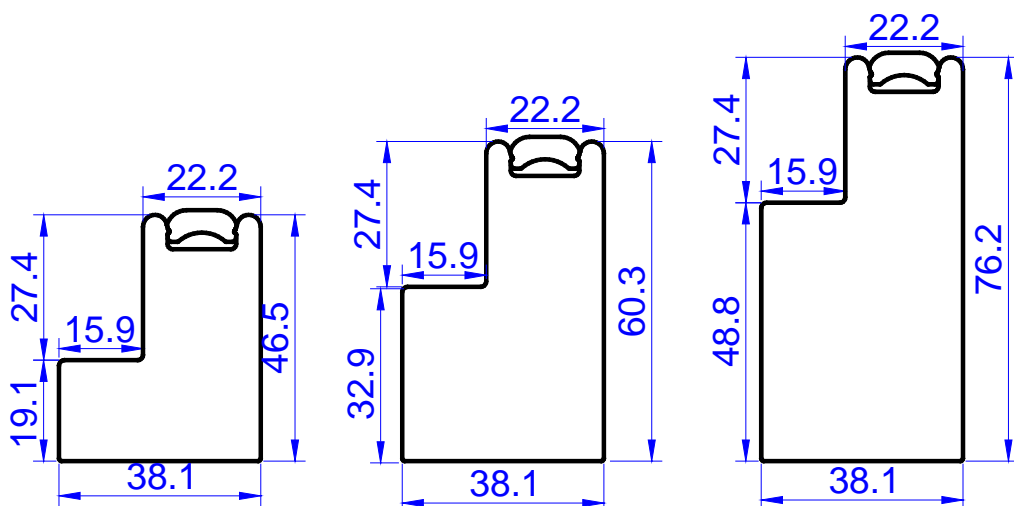
The louvres swivel on nylon pins and are controlled/connected to each other by a vertical control/connecting rod.



### Tension screws

A tension screw is inserted in a louvre in each louvre section. This will require the sides of the shutter to have holes in the stiles for the screw. Tightening or loosening the screw can adjust the louvre tension.

### Easyfitshutter Kit Frame Options



Small (46mm)

Medium (60mm)

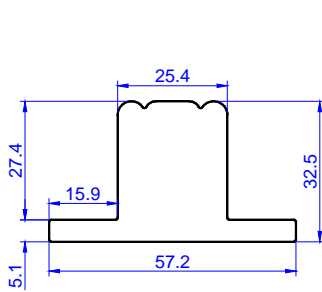
Large (76mm)

### Frame build outs

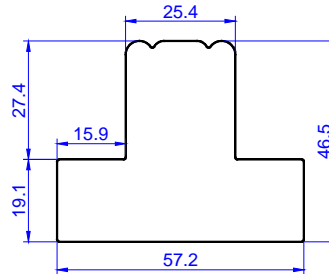
The frames above can be extended to provide extra clearance, as battens are glued onto the back of the frame to the depth you require.

## Optional T-Post

T Post's can be lined up with features on the windows. Shutters can be hung from T Post's allowing larger shutters to be used to match existing window designs.



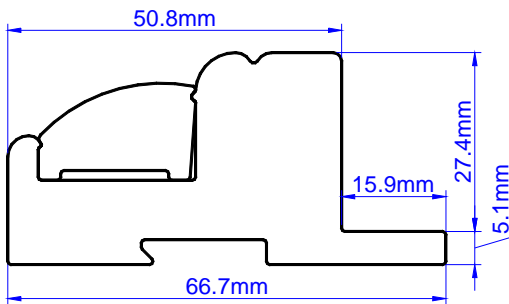
T-Post (Deco) Frame



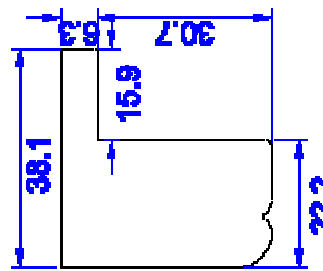
T-Post (L) Frame

## Optional frames

The Deco frame is designed to fit on the face of the wall like a surrounding architrave. Ideal for opening inwards tilt and turn windows. It can be ordered without a bottom frame or a sill plate for doorways or window sills.



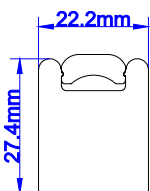
Deco Frame



Deco Bottom Sill Plate

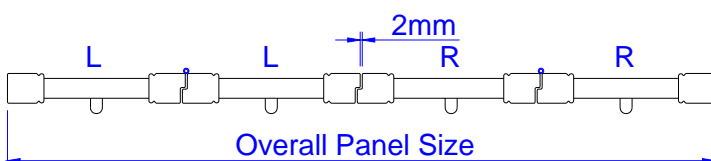
## Hang strips

Used to customise your fitting for difficult windows.



## Shutters only

If you do not wish to order shutters in a frame, sizes are taken from the outside edge of the panels.



### Colour options

The table below shows the full colour list available and default hinge and tilt rod options:

Shutter Colour	Hinge color	Hidden tilt rod colour
003 Silk White	White	White
006 Pearl	Pearl	Pearl
013 Bisque	Bisque	Bisque

### Optional Hinge Colours:

Antique Brass  
 Nickel Plated  
 Oil Rubbed Bronze  
 Black  
 Stainless Steel (surcharge)

### Shutter size limitation:

Louver size	Width			Height	
	Min.	Max		Min.	Max
		Single Hung	Bi-fold or multi-fold		
47mm	152mm	750mm	550mm	250mm	3000mm
63mm	152mm	750mm	550mm	250mm	3000mm
89mm	152mm	750mm	550mm	250mm	3000mm

**If single panel size exceeds the limitation above, the guarantee will be void.**

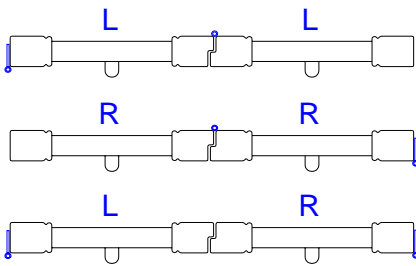
### Maximum number of folding shutters

Standard shutters are guaranteed up to 2 shutters folding left and 2 shutters folding right (LL-RR).

## Folding configurations and terminology

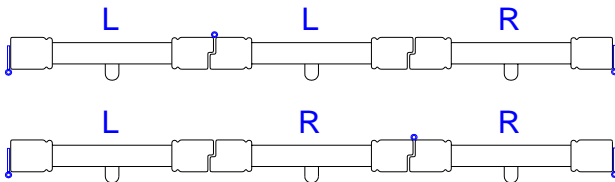
The 2 shutters shown below can be opened as follows:

- LL = 2 shutters bi-folding to the left
- RR = 2 shutters bi-folding to the right
- LR = one shutter opens left and one opens right  
(right hand shutter opens first due to the interlocking stiles)



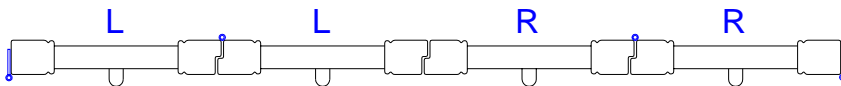
The 3 shutters shown below can be opened as follows:

- LLR = 2 shutters bi-folding to the left and 1 shutter opening to the right.
  - LRR = 2 shutters bi-folding to the right and 1 shutter opening to the left.
- (Note, the right hand shutter where the shutters meet always opens first due to the interlocking stiles)



The 4 shutters shown below can be opened as follows:

- LLRR = 2 shutters bi-folding to the left and 2 shutters bi-folding to the right
- (Note, the right hand pair of shutters always opens first due to the interlocking stiles)



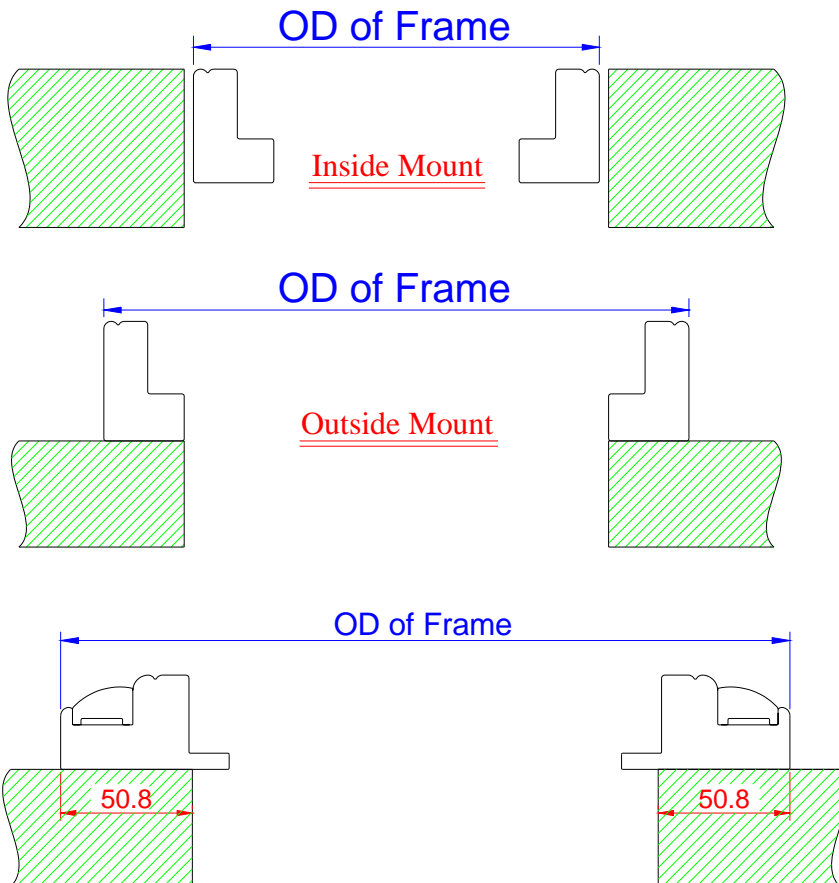
**Top opening Shutters:**

The standard gap between the top tier and bottom tier is 2.5mm.

**Full height:**

If panel height is over 1800mm and no divider rail is requested, it will void the guarantee.

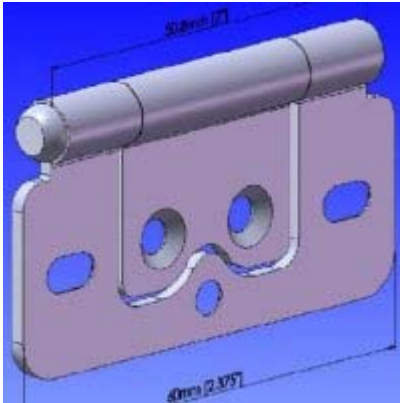
**Frame widths:** OD = Overall Dimensions of frame

**Tolerance:**

- A) **Width:** The width of the shutters can be plus or minus 1mm from the order width.
- B) **Height:** The height of the shutters can be plus or minus 1.6mm from the order height.
- C) **Horizontal middle rail location:** This location may be off by half a louvre.
- For 47mm louvre can be off by +/-19mm.
  - For 63mm louvre can be off by +/-25mm.
  - For 89mm louvre can be off by +/-38mm.

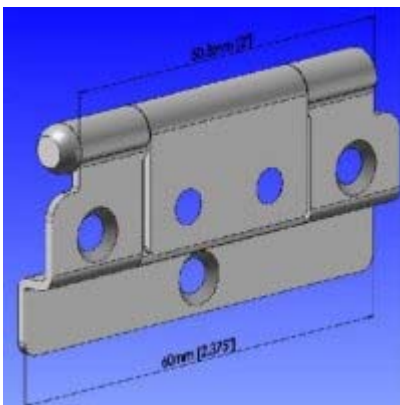
## Hinges

**Self-mortise hinge:** for the mounting the shutters to the frame

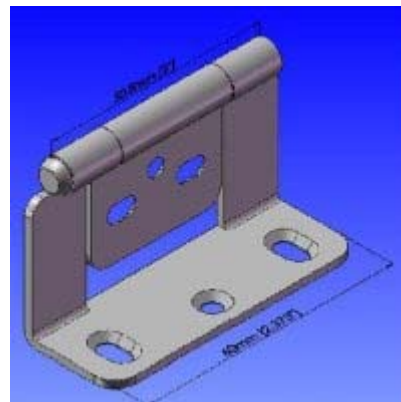


The inner piece of the hinge will be pre-mounted on the shutter; the outer piece of the hinge will be fitted to the frame with one screw through each oblong hole for adjustment up and down.

**Rebated hinge:** for interlocking shutters



**L hinge:** for hang strips

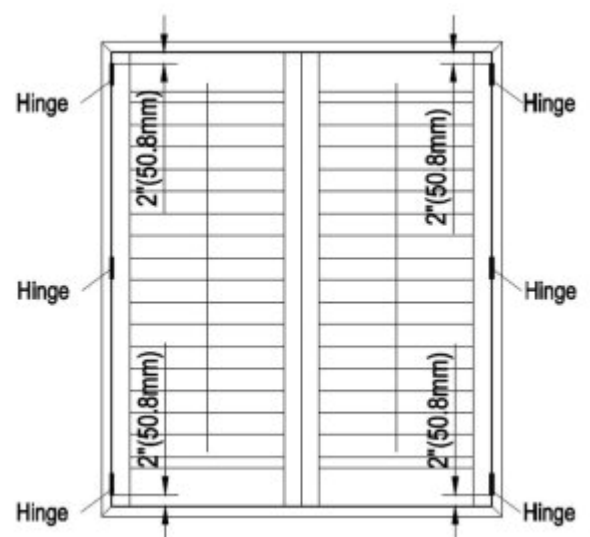


The first and last hinge position will be put 50.8mm from the top/bottom of panel.

The quantity of hinges will be decided by the shutter height:

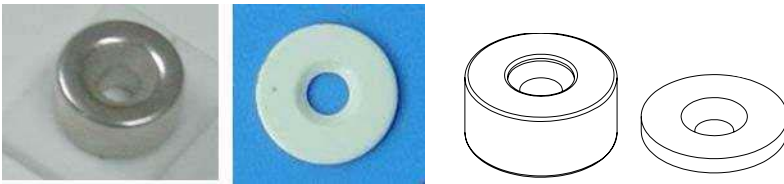
The quantity of hinges will be decided by the shutter height:

Shutter height	No. of hinges
0-1219mm	2
1219mm - 1981mm	3
1981mm - 2438mm	4
2438mm - 3048mm	5
0 - 3048mm	6



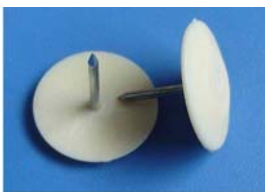
### Button Magnets

The magnets will be pre-mounted in shutters and the catch will be pre-mounted on frame.



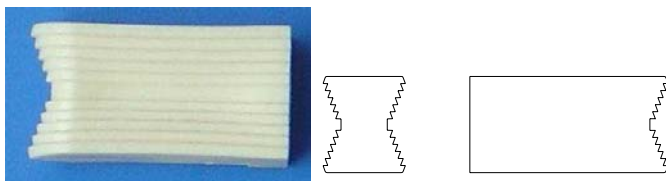
### Support Buttons

These will be fitted on the bottom of the shutter.



### Interlocking Key

For interlocking the outer frames together.



### L Shape catch

When ordering a 3 sided frame with the gap more than 2.5mm, we will supply an L shape magnet catch.



All information printed on this technical information sheet was correct at time of printing.

[www.opennshut.co.uk](http://www.opennshut.co.uk) reserves the right to change the specification at any time.