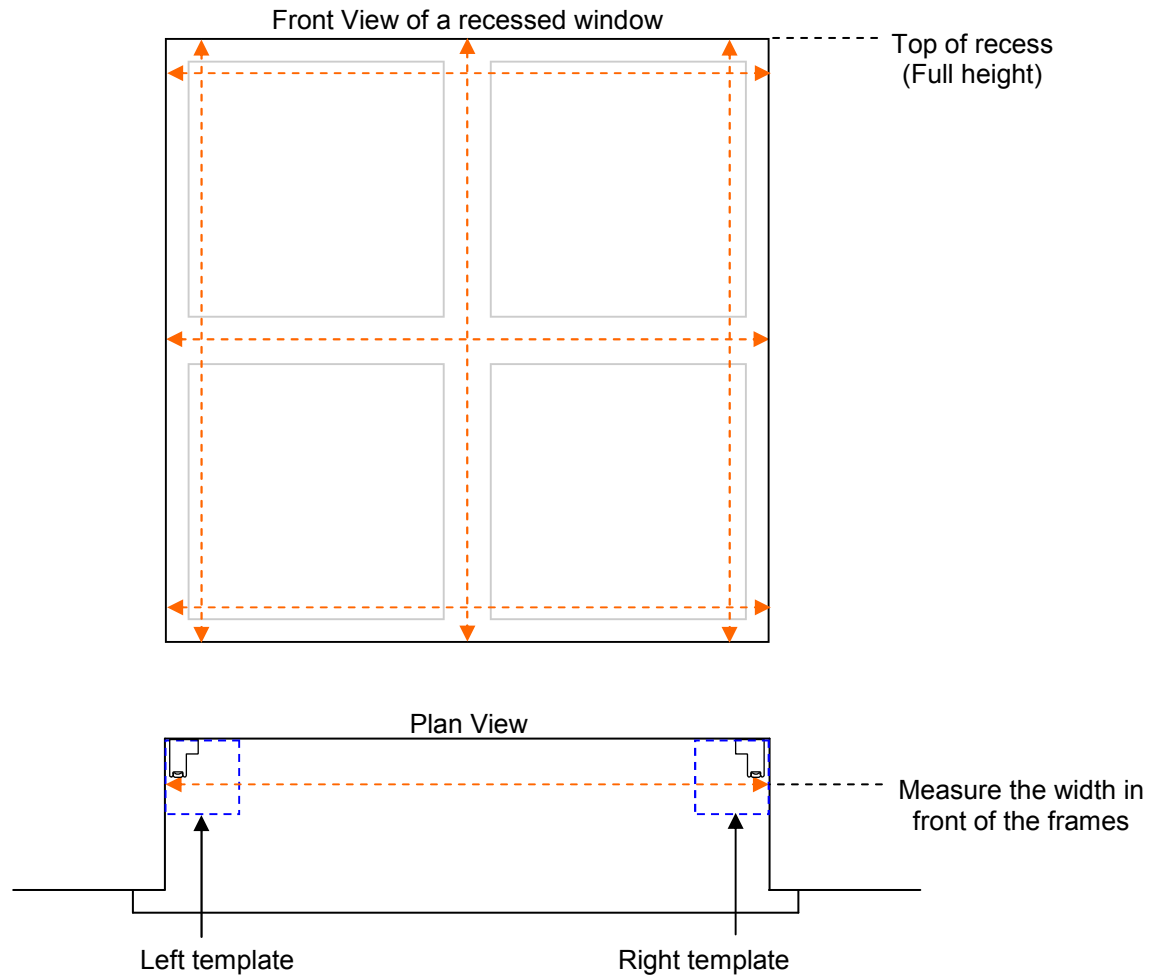


MEASURING: WIDTH & HEIGHT



1.0: Recess

How to measure a recess window

Measuring a standard recessed window is very straight forward.

Always measure in several places in front of your chosen L frame just in case the recess is at a slight angle.

Clearance

5mm fitting clearance is allowed between each L frame side and the wall, this is called the shadow gap.

Use the template to choose the correct frame size depending on your louvre choice.

Width

Measure in 3 places across the width in front of your selected L frame. (Use the smallest width.)

Height

Measure the height in 3 places in front of your selected L frame. (Use the smallest height.)

Handle

Measure how far any handles protrude from the face of the window frame. Check this against the templates.

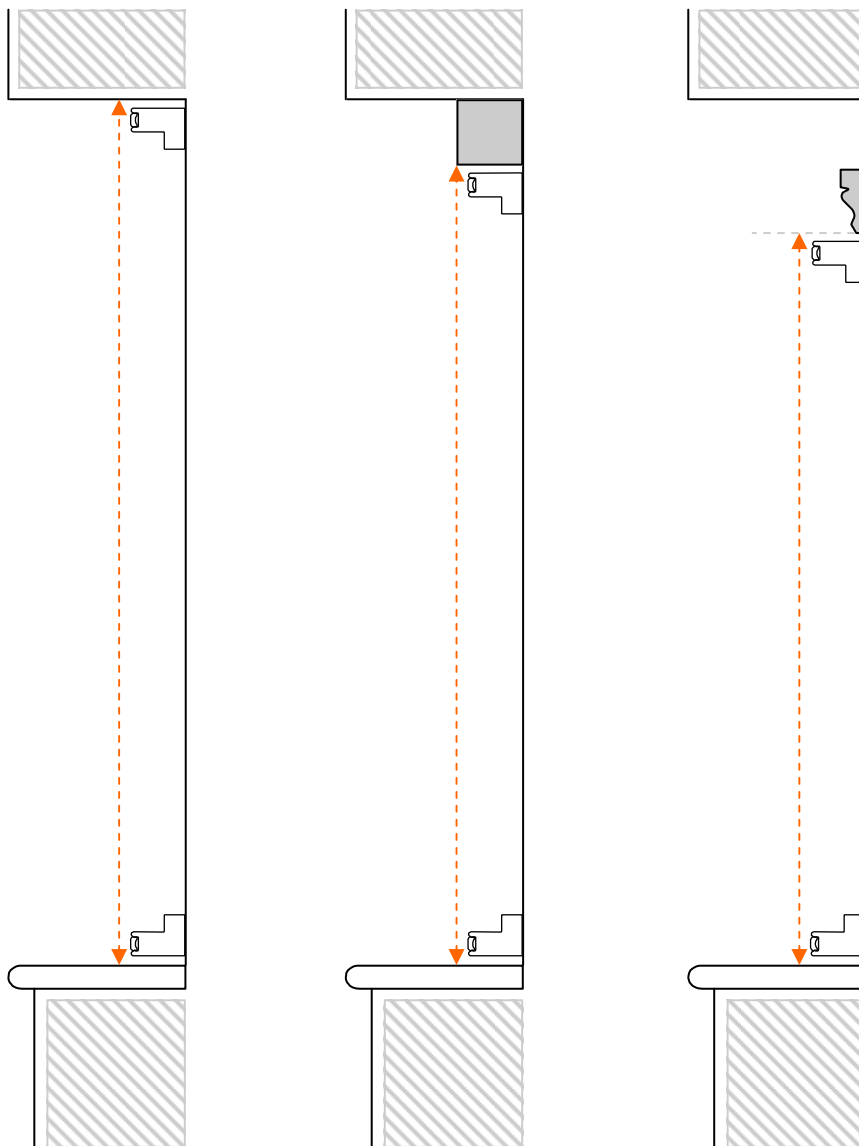
See guide '1.3 Protruding objects' for advice.

Templates

The templates will show you where the L frames are fitted within the recess and allow you to check the louvre blade clearance with the relevant frame choice.

MEASURING: HEIGHT

Side view



1.0: Recess

Measuring the height

Here are 3 examples of side views showing how shutter frames can be finished at the top of a recess and where to measure for each type.

Clearance

5mm clearance is generally required top and bottom of the recess from any obstacles or architraves.

Level

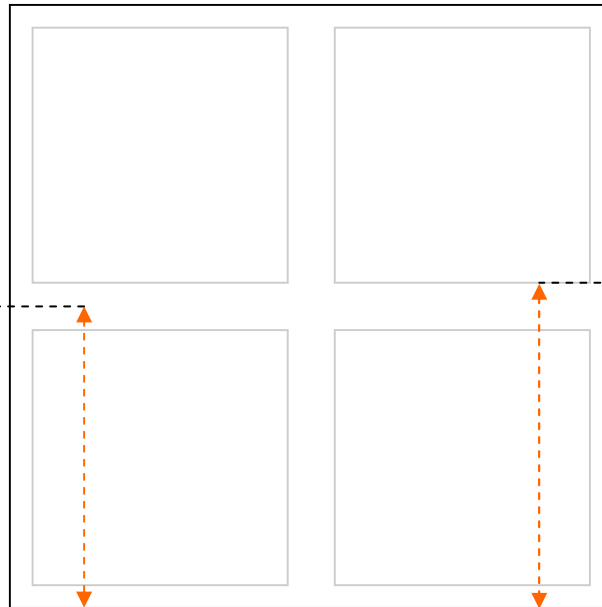
Remember to check the level and take the smallest height between the level points.

Measuring.

Measure from the sill to the inside of the top recess or architrave.

MEASURING: RAIL HEIGHTS

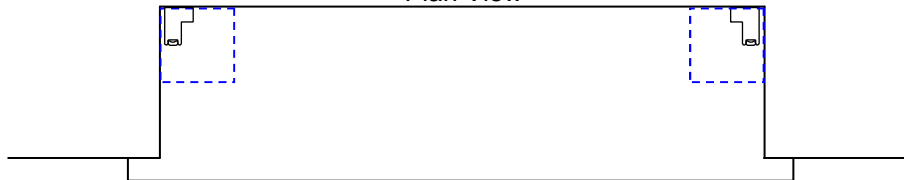
Front View of a recessed window



Centre of horizontal rail
(Full height)

Top of horizontal rail
(Top opening)
(Half height)

Plan View



1.0: Recess

Rail heights

The recessed window can be fitted with the following shutter designs:

Full height - Half height - Top opening

Find out where to take the height measurement on each design:

Horizontal rail

Measure from the sill to the **centre** of the rail on the window.

Deduct 5mm when ordering 'Frame' size. Heights over 1800mm require a horizontal rail as standard.

Half height

It is important that you do not see any of the window rails above the shutters, as these can be out of level and will make the shutters appear out of level if taken too low.

Measure from the sill to the **'top'** of the window rails, take the highest measurement.

Deduct 5mm when ordering 'Frame' size. (There are 3 sided and 4 sided frame options when ordering half height shutters.)

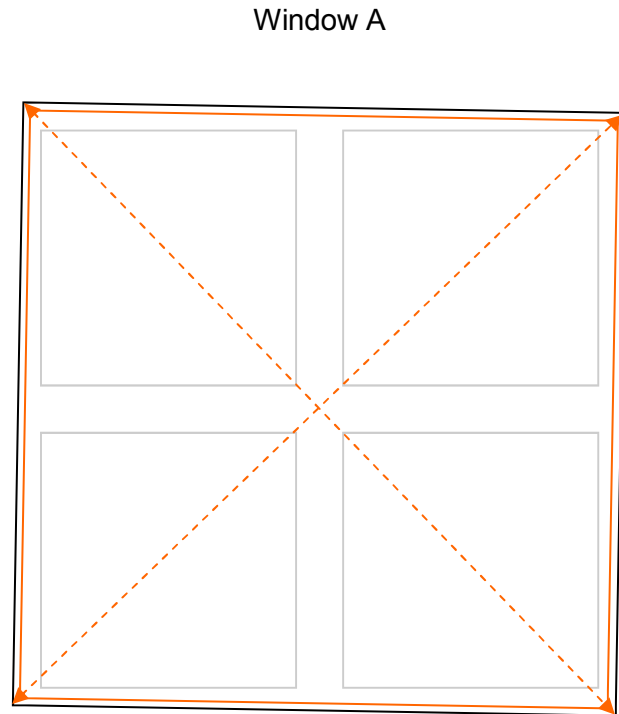
Top opening

When the top set of shutters are open it is important that you do not see any of the rails on the window as these can be out of level and will make the shutters appear out of level if this height measurement is taken too low.

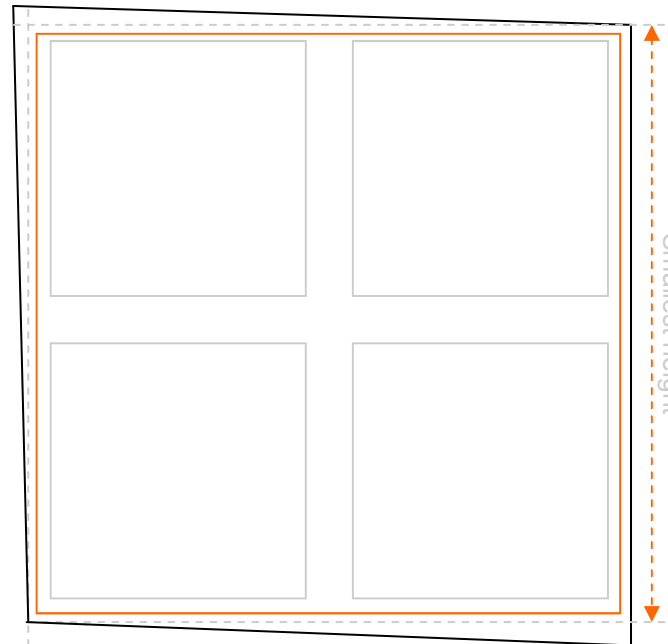
Measure from the sill to the **'top'** of the rails on the window, take the highest measurement.

Deduct 5mm when ordering 'Frame' size.

MEASURING: OUT OF LEVEL WINDOWS



Window A



Window B

Level line

- Shows the shutter frame position
- Shows the window recess

1.0: Recess

What if my window is out of level?

Window A

Sometimes windows can be out of level but still square like in this example. You can check how square your window is by measuring across the diagonals.

Both measurements will be the same if the window is square. The shutter frame can be fitted to match the window, it does not have to be fitted level.

Window B

In this example you can see the top runs out of level to the left, the bottom drops to the right and the left side is wider at the top than on the right.

Although it should not happen, it is quite normal to find this when measuring.

The grey dotted lines indicate level lines, you will need to work out the smallest width and height from the levels you take.

This might be one reason you choose to order 'Frame' size rather than 'Recess' size. It allows you to create your own shadow gap according to the levels of your window.

Advice

If you would like further advice please upload photos of your window and a similar 'Drawing B' with the relevant sizes and levels shown.

Shadow gap:

It is neater to leave a natural shadow gap than using filler. When the shutters, wall colouring and window sill are all different shades of white or colour, the filler (in another shade of white) can crack and look untidy depending the quality and how it is applied.

The shadow gap is the neatest natural alternative creating a professional finish, drawing your eye to the square shutter frame rather than the wonky window.

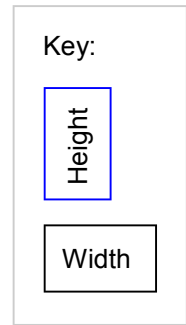
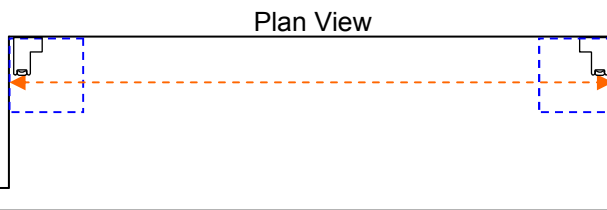
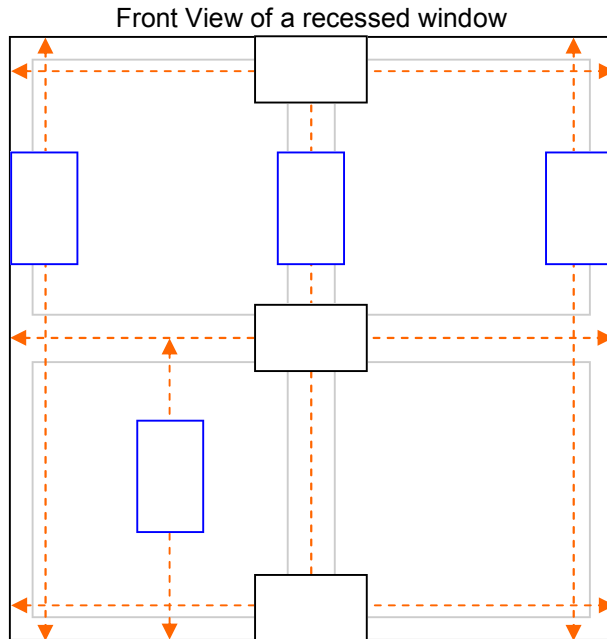
MEASURING: SURVEY FORM

1.0: Recess

Survey form.

Enter your exact window recess sizes into the boxes on the left.

Enter the smallest recess order sizes below.



Shutter details	
Room name	
Shutter type	
Louvre size	
Colour	
Frame size	
Folding	
Options	

Smallest order sizes	
Width	
Height	
Horizontal Rail	
Top opening	
Handle	

'Double check your measuring'

Frame size.

An Important note about how frames are measured.

MEASURING: FRAME ORDER SIZE

Important:

All 'Frame' order sizes on L frames are taken from this highlighted edge.

