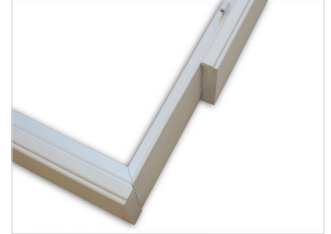
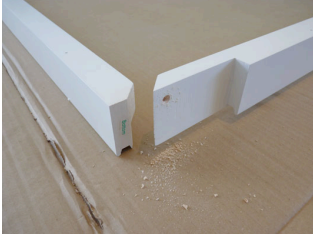


FITTING GUIDE: 12.5 SKIRTING AROUND PATIO DOORS

Option 1: Pre-cut frame



Mitred frame corners that have skirting cut outs in them will need to be screwed together as there is no room for the interlocking keys. Drill a pilot hole through the frame side into the light stop of the bottom frame as shown. Depending on the cut out depth use a 45mm screw (not supplied) to screw the joint together. You can fit your shutters using the standard 12.2 patio fitting guide.

Option 1: Cutting it

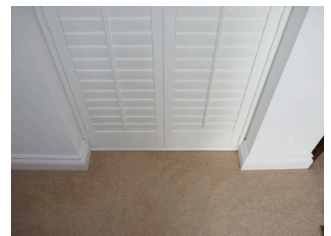
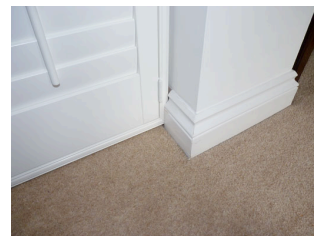
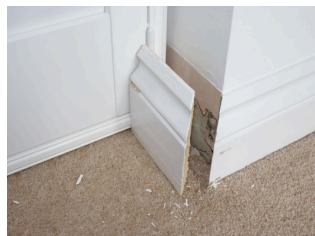
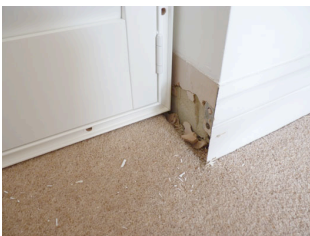


Cut out the section of skirting board you do not require, this can be done as follows:

By hand - It is possible to cut the skirting with a hand saw, if you can, use a floor board saw or similar. The last sections may need to be cut away using a chisel. Take care not to mark the wall with the saw

Multi tool - This will make it easy to remove a section of skirting, just cut down your lines and hook out the skirting section not required.

Option 2: Removing it



Remove the section of skirting then re-fit it once the frame has been fitted. Using a knife, cut along the joint between the wall and skirting to break the seal. If you can see any holes that have been filled, hook out the filler and remove the screws. Take care not to snap the small return piece, but it can be glued before replacing.

Using a mini flat crow bar or similar, in the area the frame is being fitted, pull off the skirting. Any marks on the wall will be hidden by the frame.