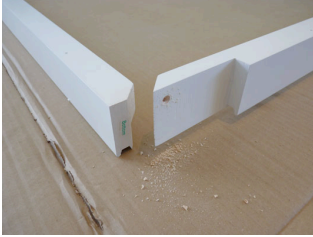


FITTING GUIDE: 14.2 - TILED RECESS

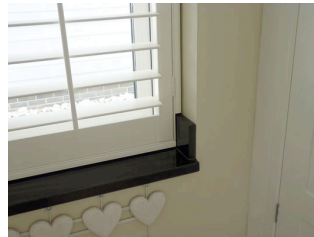
Option 1: Tiles - pre cut



Mitred corners that have tile cut outs in them will need to be screwed together as there is no room for the interlocking keys. Drill a pilot hole through the frame side into the light stop of the bottom frame as shown. Depending on the cut out depth use a 45mm screw. (Not supplied.)

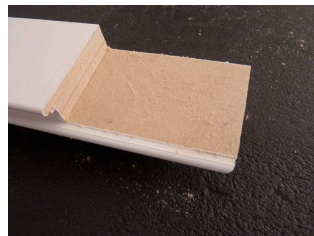
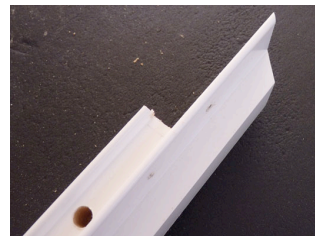
Once the frame is fully assembled you can follow the main 1.3 recess fitting guide as the frame will sit over your tiles. When centralising the frame in the recess check for an even shadow gap around the tile cut out area.

Option 2: Up-stands - pre cut



Up-stands cut outs can be treated the same way as tile cut outs, here are some examples.

Option 3: Cutting your own frame



Choose to cut out the frame yourself, you may need to move the lower hinge position.