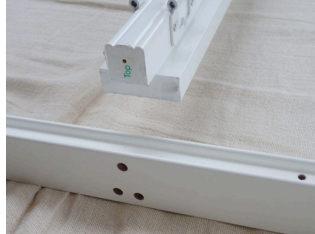


FITTING GUIDE: 3.5 FITTING TPOSTS

Tposts: Assembling Tposts



Tposts are an extra part of the frame that need to be screwed into place before you fit the shutters.

Once the main outer frame is assembled, the Tposts are screwed in through the top and bottom frames. The Tposts are labelled, the holes are pre-drilled and the screws are supplied.

With the front of the frame facing you and the top furthest away, place the Tposts into position within the frame.

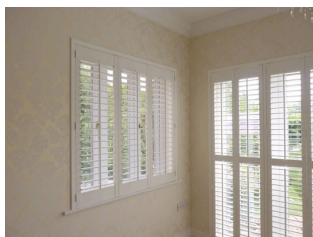
Screw the Tposts into place using one of the small 40mm screws provided. Use one screw first then check the shutters and Tposts are evenly spaced by fitting the shutters into the frame temporarily.

Fit the panel feet to the bottom of the shutters, fit the shutters in the frame and connect them together using the hinge pins to achieve the correct spacing.

If any adjustments are required, loosen the single screw in the Tpost and make your adjustments, use the second screw to secure the Tpost into place, then re-tighten the first screw.

Remove the panels when lifting the frame onto the window sill and continue fitting using the main fitting guide.

Tposts: Fitting Tposts



Z frame Tposts are not supplied with removable inserts, they are only fixed via the top and bottom frames.

When using Tposts with Z frames it's likely you will be using a bottom sill plate. Sill plates can be fixed down to the window sill or floor. There are no pre-drilled holes in the sill plates so drill your own pilot holes to suit the window style.

Hinge screws - When the fitting is complete one of the last jobs is to screw in the final locking hinge screws. Tposts come with smaller hinge screws, these are designed for the Tpost hinges rather than the main frame hinges.

Screw them into place when you happy with the final fitting.